



WINTER

**JANUARY
FEBRUARY**

2012



NORTH DAKOTA INTERIOR DESIGNERS

PO Box 1692, Fargo, ND 58107-1692 www.ndid.org president@ndid.org

NEWSLETTER

IN THIS ISSUE

Letter from the Editor

Upcoming Events

February 6th - General Membership Meeting

March 3rd - Tour De Habitat

March 19th - Student Member Appreciation

More to come...

Meet Board Members

Shelly Richard

Jo Jensen

Industry Articles

Flooring Characteristics - Benefits

Healthcare - Designing for Patient Safety

Announcements

Student Scholarship

Career Opportunities

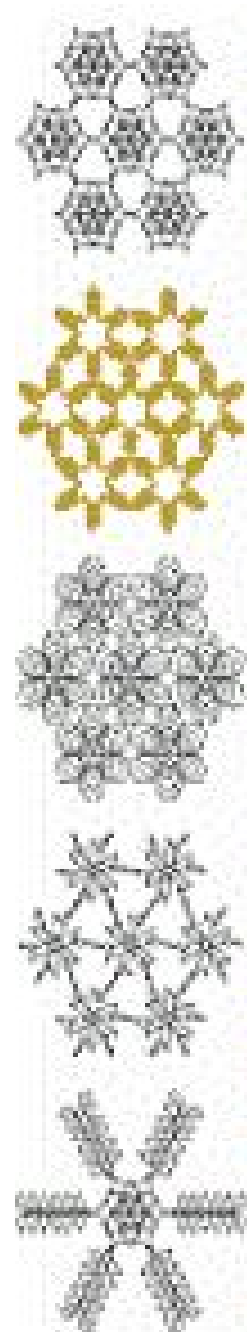
NCIDQ News

Member Passed

NDID NCIDQ Support/Scholarship

Past Events

Christmas Project



Letter from the Editor

Hello NDID Members!

We are well into winter...and I don't know about you - but I've really enjoyed the unseasonably mild weather so far. It seems like half the season has been like spring, and now the real spring is just around the corner.

The NDID Board is excited for all of the fun events we have in store for the upcoming months. We hope you can make it to the General Members Meeting next week - Monday February 6th. We have an interesting new venue and agenda set up, so check out the details in this issue. At the meeting we can touch on the Tour De Habitat Event coming up in March and hopefully some people will be interested in getting involved. Also in March we will be hosting Student Appreciation at the Bowler. We hope all of our Student Members are able to come join us for a good time. As spring rolls in we will be having our annual Showcase and hope to show some appreciation to our industry members as well. And lastly, as we move into summer we are planning a June Golf Outing and hopefully a trip to the cities sometime in July...more to come on those ideas.

Check out the announcement section this issue from some awesome opportunities. As a design student you will want to check out the scholarship info. And as a design professional there are some great job opportunities out there. Don't miss your shot!

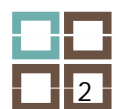
We are super excited to announce our newest NCIDQ certificate holder! And also to inform you about the support that you can receive from NDID if you are working on your NCIDQ - you won't want to miss out on this!

Lastly, I want to give a big thanks to Teressia for planning the Christmas Party in December, and to everybody who came - It was a fun night...a great time was had by all! Also thank you to Becky for heading up the Christmas project this year, and to everyone who was involved with this - it was a great success! See details and photos in the issue ahead.

Hope you Enjoy...

Sarah Huckle

Newsletter Coordinator





FEBRUARY GENERAL MEMBERS MEETING

WHEN: Monday February 6th @ 5:30pm

WHERE: Ecce Yoga+Art Studio



216 N Broadway Fargo, ND 58102

AGENDA

General Meeting

Hors d'oeuvres & Refreshments

Tour of the Gallery

3 Presenters/Artists will be showcasing their work...

Jessica Wachter

Jessica Wachter, originally from Bismarck, ND, currently resides in Fargo, ND. She is a graduate of Bismarck High School. Jessica graduated Magna Cum Laude from North Dakota State University with a B.S. degree in Art and a minor in Interior Design. Her mixed-media work combines printmaking, oil painting and photography.

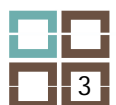
Jay Pfeifer

The art of Jay Pfeifer is defined more by his material and his long familiarity with them than by any preconceived themes or designs. From the building sites and construction zones of his everyday work life, he gathers the raw components — lath, sand, joint, compound, roofing paper, even coffee grounds and motor oil — which are melded and transformed into the rich forms and vistas of his “paintings,” the term he prefers. Raised in the breadbasket country of Buffalo, North Dakota, Pfeifer now resides in nearby Fargo, in the heart of the Red River Valley, 10,000 square miles of bountiful, flat-as-a-tabletop farmland.

Michael Strand

activism + art + craft + design

After 20 years away, Michael Strand has returned to his nordic roots, and lives and works in Fargo, North Dakota as the Department Head and Professor of Art at North Dakota State University.



UPCOMING EVENTS



Why we raise money....

Raking leaves, a place to plant a vegetable garden, snow forts in the yard... Homeownership has its benefits. Unfortunately there are hard-working families that can't quite achieve that dream. Lake Agassiz Habitat for Humanity is committed to building simple, decent and affordable homes in order to better families and communities here and around the world. Why do we need you?

As a rider you can take your passion for cycling and desire to help others by raising awareness and funds for Habitat for Humanity. Not passionate about cycling? Don't worry! You can spend a fun Saturday afternoon leisurely pedaling and cheering on your teammates as you work together to make a lasting difference in the lives of local families. By raising funds from family, friends, businesses and church groups, you will raise not only much needed dollars to support the local Habitat for Humanity affiliate, but also awareness in our community about the families that are in need of a place to call home.

Lake Agassiz Habitat for Humanity's goal is to raise \$40,000 this year through Tour de Habitat to support the construction of homes for low-income families in Cass and Clay counties in 2012. We need you to help us make a difference!

Thanks for supporting Lake Agassiz Habitat for Humanity's mission and making a family's dream of homeownership a reality.

What is Tour de Habitat?

Tour de Habitat is a stationary bike race to raise money for Lake Agassiz Habitat for Humanity where teams bike to build homes and hope in our community. It's Lake Agassiz Habitat for Humanity's biggest fundraiser of the year with proceeds supporting the construction of homes for families in our community. Our goal for 2012 is to raise \$40,000 to support build projects planned for 2012!

When & Where

Saturday, March 3, 2012

1:00 p.m.

New location

Courts Plus Fitness Center (3491 University Dr. S, Fargo)



How it Works...

- Each team consists of six cyclists.
- Each team member pedals a stationary bike competing against other teams for 15 minutes.
- Prizes are awarded for the most money raised, most miles traveled and more!
- All participants will receive an event t-shirt.

NDID is planning on having 2 teams!!
Contact **Monica Hart** if you are interested in more info. and want to get involved!!



Student Appreciation...



LETS GO BOWLING!!!

Monday March 19th @ 5:30pm

Join the fun with bowling, pizza, and beverage.
Oh - And not to mention...Awesome Door Prizes!!

Stay tuned for these
other upcoming events...

- MAY** Annual Showcase
- JUNE** Golf Outing
- JULY** Minneapolis Bus Trip



MEET BOARD MEMBERS



Membership Coordinator

Full Name: Michelle (Shelly) Grace Richard

Location of employment, how long have you been there, what do you do there:

Foss Architecture & Interiors. This year makes 13 years at Foss!

What is your favorite part of Interior Design and/or what you do?

After 21 years in the business, I still love the variety of projects and opportunities to be creative. That, and all the great people – both clients and co-workers – that I have been fortunate to work with over the years.

Meet my family!

We are a small family – just my husband Tim and my daughter Ashley and me. And since Ashley left Fargo in 2003 to attend Ithaca College in upstate New York to earn a degree in Theatrical Lighting Design and ended up staying and working in New York after college, Tim and I have been empty nesters for quite some time. Good thing there are planes! We love going to NY and the Big Apple to visit her!

What are your hobbies and things you enjoy to do other than work?

Lots of stuff! Some of it would be biking, running, volleyball, volunteering and party/event planning. Since my daughter is all grown up, I love helping my friends with younger kids plan birthday parties, etc. I've been told if my ID career doesn't work out, I could fall back on event planning. HA

Places that you have lived? Mentor, Minnesota and Fargo, North Dakota

Favorite place to travel? So far... Sorrento, Italy (on the Amalfi coast). It is BEAU- TI-OUS!!!!

Favorite and Least Favorite Foods? I LOVE chocolate and red wine – and that would be the real chocolate...milk chocolate...not that dark chocolate stuff. J I HATE coffee and tea.

Favorite Restaurant? Doolittles and Maxwells.

Favorite Music and/or Song? Too many to pick. But if I had to pick one it would be Un-chained Melody by the Righteous Brothers since this was Tim's and my first dance song at our wedding.

If I won the lottery I would... Donate a portion to my two favorite charities: National MS Society and Alzheimer's Assoc., then a portion would go to my daughter and then finally HAVE SOME FUN by travelling abroad with Tim.

Something very few people know about me... I enjoy snow blowing and have a fetish about keeping my driveway clean and clear of snow in the winter.

If I were stuck on an island I would bring... Well if you weren't paying attention to the previous questions, it would be WINE and CHOCOLATE and, of course, Tim!



MEET BOARD MEMBERS



Canstruction Chair

Full Name: Jo Marie Jensen

Location of employment, how long have you been there, what do you do there:

Our HQ office is located in Maple Grove, MN. We do have a showroom here in Fargo at 3002 Fitchner Drive, suite C. I came on board with Ceramic Tileworks August of 2010. I'm the architectural representative for ND & SD

What is your favorite part of Interior Design and/or what you do?

Achieving the wants and needs of what the client is looking for.

Meet my family!

I have one Old English Sheep dog. Her name is Emma; she's 8 but still acts like a puppy when friends stop over. I was also a Foster Mom to Carson for one year. Of which I still see him about once a month.

What are your hobbies and things you enjoy to do other than work?

Working in my flower garden, sun tanning, redecorating to redecorate! And I love to sew when I have time.

Places that you have lived?

East Grand Forks, Austin, MN, Minneapolis, and I was raised here in Fargo.

Favorite place to travel?

Any place that has the warm sunshine that you can enjoy!

Favorite and Least Favorite Foods?

Favorite - a Norwegian delicacy Klub Least - Fish

Favorite Restaurant?

It's a tie: JL Beers or Doolittle's

Favorite Music and/or Song?

Adele any song she does is great. She has an amazing voice!

If I won the lottery I would...

Invest, Donate to Make a Wish and Build my dream home

Something very few people know about me...

I collect Barbie's only if I like how their hair is done and their outfit.

If I were stuck on an island I would bring...

Suntan Oil, Diet Pepsi and lounge chair. I little rum won't hurt either ;)





Understanding Key Flooring Characteristics Leads to Long-Term Benefits

By Lewis G. Migliore - November 2011

Carpeting and hard-surface flooring are among the most visible elements of institutional and commercial facilities. Occupants and visitors see them and use them during their entire time in a building. For these reasons — and the costs involved in specifying, installing, and maintaining flooring — maintenance managers must make smart decisions to ensure these products perform as expected and remain aesthetically pleasing.

The two biggest causes of flooring failures are improper installation and using the wrong product in the wrong place. The chief reason for both types of failure is ignorance. Flooring generally is a mystery to managers, and proper specification, selection, and installation can be even more mysterious. Unless managers understand the products, the conditions in which these products must perform, installation conditions, and the installation process, problems are inevitable.

Bumps in the Road

To avoid poor performance, poor appearance, and shortened performance life in specifying carpet and flooring, managers need to avoid a host of potential problems. For carpet, these mistakes include: the wrong color — too light or dark; the wrong pattern — tufted woven or printed; the wrong style — cut, loop, or cut and loop; the wrong construction — tufted, woven, loop or cut. Mistakes also can involve an improper backing system, texture, or installation system.

For hard-surface flooring, mistakes most often involve the wrong type, color, material, or surface texture. For all types of flooring materials, overlooking any one of several considerations can lead to failure and monetary loss. Managers must pay attention to the substrate's condition by being aware of moisture, alkalinity, curing compounds and foreign substances. They also must be aware of ambient conditions of the space, including the operation of the HVAC system.

Similarly, managers need to consider the extent to which flooring lends itself to long-term sustainability. Certain pre- and post-installation issues also are important. Is the installation contractor experienced in installing and working with the selected materials? What strategies in place will protect flooring from soil tracked into the building and from general wear and tear?





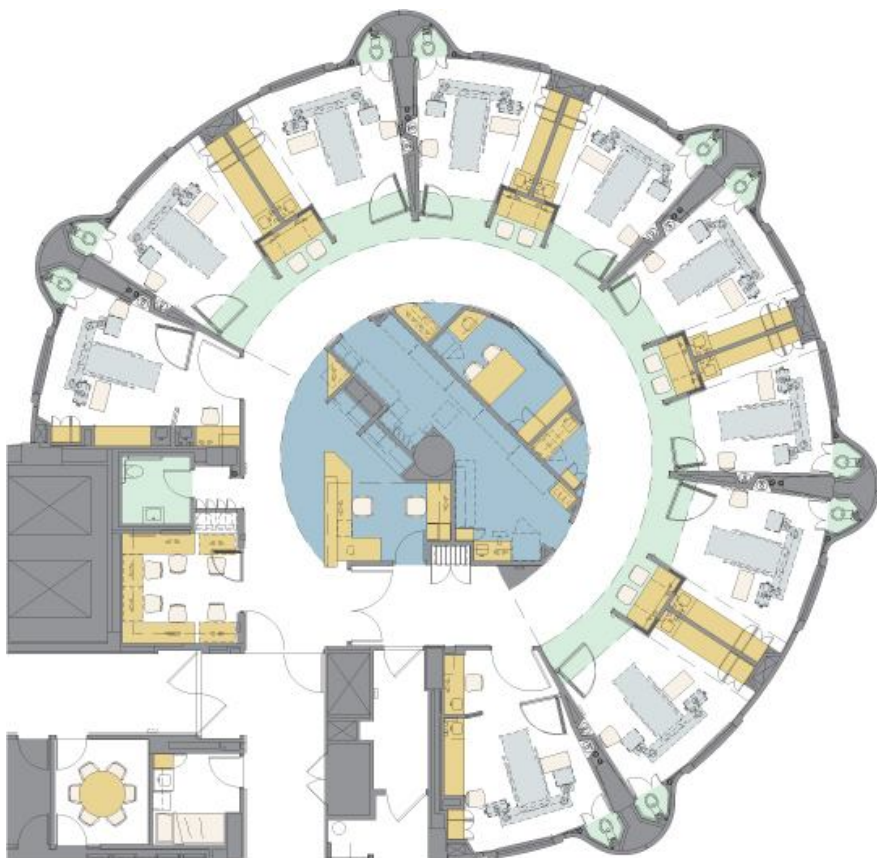
TOPIC: HEALTHCARE DESIGN

Why is it important to design for patient safety?

<http://www.healthcaredesignmagazine.com/article/designing-patient-safety>

It has become increasingly clear that the problem of patient safety does not lie solely in the hands of clinicians or frontline healthcare staff. The healthcare system has many inherent latent conditions (holes and weaknesses) that interact in complex ways and result in adverse events (Reason, 2000). A growing body of research shows that features in the built environment—such as light, noise, air quality, room layout, and others—contribute to adverse patient safety outcomes, like healthcare-associated infections, medication errors, and falls in healthcare settings (Joseph & Rashid, 2007; Ulrich et al., 2008).

The conceptual model (Figure), based on Vincent (1998) and Reason's (2000) work, shows the role of the physical environment as a latent condition that contributes to patient safety. Often, these latent conditions that adversely impact patient safety are built into the physical environment during the planning, design, and construction of healthcare facilities. For example, the location of emergency departments and intensive care units might necessitate the transport of critically ill patients over long distances, potentially causing patient complications. Handwashing sinks located in inconvenient or inaccessible locations might result in poor handwashing compliance among physicians and nurses.



Given the massive investment anticipated in healthcare facility construction in the next 10 years, there is an urgent need for a well-defined and standard methodology to identify and eliminate built environment latent conditions that impact patient safety during the planning, design, and construction of healthcare facilities. Design teams themselves are often unfamiliar with the possible built environment



ANNOUNCEMENTS



ATTENTION DESIGN STUDENTS:

NDID is offering you a scholarship!!

Check out the details on NDSU scholarship website.
And find the application on the NDID website under "Forms"
Submission deadline is **February 28th 2012**

ATTENTION DESIGN PROFESSIONALS:

Architectural/Design Representative with Syverson Tile & Stone

Contact Lisa Dirk 701-277-9745 ldirk@syversontile.com

The individual will represent our product lines in both architectural and design firms. The position is outlined as:

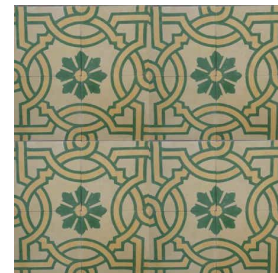
1. Providing architectural and design firms with samples, product knowledge, and training.
2. Recommending products for projects and securing specifications in both commercial and residential arenas.
3. Tracking specifications to bid process and bidding to contractors.
4. Tracking jobs to find out who obtains the project and follow up with our outside sales representative in securing orders for projects.
5. Working with designers both in architectural firms and in independent firms to obtain specifications for their projects.

Skills required:

1. Well organized and good follow through on work.
2. Ability to work independently.
3. Articulate – must be comfortable doing presentations and speaking to groups.
4. Professional – in both appearance and manner.

Educational/Background requirements:

1. Prefer a minimum – degree in Interior Design and/or architecture
2. Previous practical experience in interior design
3. Design work in an architectural office preferred but not required
4. Previous sales experience or experience in an architectural rep position



Salary – DOE for annual salary. Specification fee of ½% of the project sales value. Travel expenses include mileage, room, and meals. Full benefit package to include health, dental, vision, life insurance and additional options.

Sales/Design Representative with InterOffice

Contact Aubree 701-232-3013 aubree@interofficefargo.com

InterOffice is looking for someone to focus on Outside Sales, but also be able to use AutoCAD and draw up plans. Someone that is energetic, self motivated and a team player. Their main lines are Herman Miller & DIRTT, but also a variety of commercial manufactures.

Hours are 8:00am - 5:00pm Monday thru Friday.



CONGRATULATIONS TO NDID
BOARD MEMBER
ELLE TAYLOR
FOR PASSING HER NCIDQ EXAM!!

PRESS RELEASE...

FARGO, North Dakota— Christianson's Business Furniture is pleased to announce that design professional Elle Taylor, NDID, passed the fall 2011 National Council for Interior Design Qualification (NCIDQ) certification exam. Taylor earned her Bachelor of Science degree in Interior Design through North Dakota State University's four-year Council for Interior Design Accreditation (CIDA) program. She has three years of professional design experience working as an interior designer for Christianson's.

STUDYING TO TAKE THE NCIDQ EXAM?

NDID encourages its members to complete the exam!

NDID will award 5 - \$200 scholarships to any member that successfully passes! Please complete the "request for funds" form on the web - and submit a copy of your certificate card!

REGISTRATION...

You can still register for the Spring Exam -
Late Registration until February 7th

OR catch the next registration in **JUNE!!**

CHECK OUT THE NCIDQ WEBSITE FOR NEW 2012 STUDY MATERIAL!!!





THE CHRISTMAS PROJECT

We worked with the local 'Rebuilding Together' organization who got us in touch with a very unique and VERY deserving family. Actually, it's more than one family! Here's a little snippet from the Rebuilding Together Executive Director Russ Richards, explaining their situation:

"We have a mother (Grace) with special needs, MS/Seizure disorder/Mental Health with 3 special needs children (age 12,11,9). A situation came up where Grace was unable to care for her children without family stepping in and helping. Her sister (Leah) who also has a husband (Bob) with failing health, he is disabled, transplant patient, with lifelong diabetes, and neuropathy welcomed her sister and her children into the home to prevent out of home placement for the children. Leah has also taken in her daughter (Alitta) and her four year old grandson who is being treated for liver cancer. Alitta had just given birth to her second child, a brand new baby girl."



So in a matter of a few months this home went from just two adults in a small home, to four adults with five children including a brand new baby. Leah is the only person working full time in this household.

We had a fantastic group of NDID members and NDID student members from NDSU who helped with this project. After a phone interview with Leah, I had gathered a pretty big list of things that were needed at the house, all practical items. Leah was very aware of the needs of having this many family members under one roof, so she hardly mentioned anything that would be considered 'fun' or a 'frivolous' gift.

Our committee gathered at Floor to Ceiling and put our heads together on how to spend our budget. We came up with some great gift ideas and divvied out the shopping lists, and along with added money left over from the NDID Christmas party, we were able to spend every dime of \$1120 on them.



Specific gifts went to each member, including FUN items along with very practical ones. We used remaining funds to purchase a large gift card to Cashwise Foods and another large generic Visa gift card to use anywhere they saw fit.

We delivered the gifts before Christmas... the family was so excited to see the gifts loaded in the back of my car stacked to the ceiling, the children especially! A few other NDID members helped by bringing their donations of toys to add to the gifts, along with one member's family dropping off additional items. All in all it was a GREAT SUCCESS!